



M-BOSS Compact

Operating Instructions
Betriebsanleitung
Manuel d'utilisation
Manual de Instrucciones
Manual de instruções
Manuale d'uso

Bedieningshandleiding
Brugervejledning
Bruksanvisning
Bruksanvisning
Käyttöohjeet
Instrukcja obsługi

Návod k obsluze
Használati útmutató
Navodila za uporabo
Instrucțiuni de operare
Kullanım talimatları

Operating Instructions

Contents

1	User information	2		
1.1	Field of application	2		
1.2	Used labels and symbols	2		
1.3	Safekeeping of documents and actuality	2		
1.4	Intended use	2		
1.5	EC conformity	2		
1.6	Customer service and spare parts	2		
2	Safety instructions	3		
2.1	Representation and layout of warning instructions	3		
2.2	Danger grading of warning instructions	3		
2.3	Basic safety instructions	3		
2.4	Limitations of use	3		
2.5	Operator obligations	3		
3	Transport and storage	3		
4	Layout and function	4		
4.1	Layout	4		
4.2	Organiser unit (Device 544-21000)	4		
4.3	Drawer insert (Device 544-20000)	4		
4.4	Magazines	5		
4.5	Stainless steel marker (marker)	5		
4.6	Operating elements	5		
4.6.1	Operating display	5		
4.6.2	Button functions on the operating display	6		
4.6.3	Organiser unit status lamp	6		
4.6.4	Organiser unit counter	6		
4.6.5	Organiser unit reset button	6		
4.7	Function	6		
5	Initial operation	7		
5.1	Device placement	7		
5.2	Installing the drivers	7		
5.3	Connect the device	8		
5.4	Installing the device in the operating system	8		
5.5	Installing the TagPrint Pro 3.0 software	10		
6	Operating instructions	10		
6.1	Switch on the device	10		
6.2	Filling and inserting the magazine	10		
6.3	Performing a single embossing	11		
6.4	Performing serial embossing	13		
6.5	Removing the marker	14		
6.5.1	Emptying the drawer (Article-No. 544-20000)	14		
6.5.2	Emptying the organiser unit (Article-No. 544-21000)	14		
7	Troubleshooting	15		
7.1	Marker errors	15		
7.2	Device errors	15		
7.3	Software errors	15		
7.4	Organiser unit errors	15		
8	Maintenance	16		
8.1	Preparation and follow-up tasks	16		
8.2	Maintenance and cleaning	16		
8.2.1	Regular maintenance work	16		
8.2.2	Cleaning agents and materials	16		
8.2.3	Cleaning the light sensors and light barriers	16		
8.2.4	Cleaning and lubricating the guide rods	17		
8.2.5	Cleaning the working area and drawer	18		
8.2.6	Cleaning the exterior housing	18		
8.2.7	Cleaning the inside of the folding cover	18		
8.3	Service	18		
8.3.1	Adjusting the gripper	18		
8.3.2	Relieving the embossing drum	18		
8.3.3	Replacing the power input fuse	19		
9	Taking out of operation	19		
9.1	Taking the device out of operation	19		
9.2	Putting the device back into operation	19		
10	Disposal	19		
11	Technical data	20		
11.1	M-BOSS Compact	20		
11.2	Stainless steel marker	20		

- GB
- DE
- FR
- ES
- PT
- IT
- NL
- DK
- NO
- SE
- FI
- PL
- CZ
- HU
- SI
- RO
- TR

1 User information

Thank you for purchasing a product from HellermannTyton GmbH. Before the device is used, all persons who will be using the device must have carefully read and understood the operating instructions.

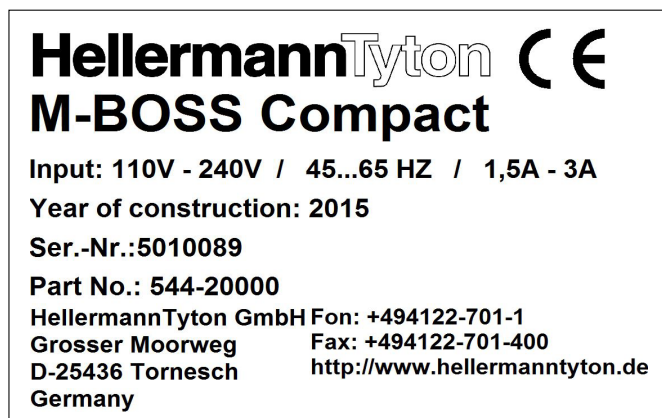
This documentation as well as translations hereof are the property of the HellermannTyton Group. Replication, editing, reproducing or distribution in whole or in parts for purposes other than following the original intended use requires the prior written consent from the HellermannTyton Group.

1.1 Field of application

The operating instructions are directed towards technicians and the operator. The operating instructions only apply for the following M-BOSS Compact stainless steel embossing system, called "device" in the following:

TYPE	Article-No.
M-BOSS Compact	544-20000
M-BOSS Compact and Organiser	544-21000

The type can be read from the rating plate. The rating plate with the 7-digit serial number can be found on the rear of the device.



Example of a rating plate.


1.2 Used labels and symbols

In these instructions, different labels and symbols are used in the text. These are explained in the following:

- Symbol for an enumeration
- ▶ Symbol for an instruction
- 1 First step
- 2 Following steps
- ☑ Outcome

Display text/screen text

→ Cross reference

 Texts with this symbol contain information on environmental protection.

 Texts with this symbol contain additional information.

1.3 Safekeeping of documents and actuality

- ▶ Keep these instructions as well as all other supplied documents in a safe place, so that they are available at any time.
- ▶ Hand over the complete documentation to the next owner.
- ▶ Please note:
Due to the continuous development of the devices, there may be deviations between the documentation and the device. The current edition can be found at www.HellermannTyton.de/downloads.

1.4 Intended use

The M-BOSS Compact stainless steel embossing system serves to automatically emboss HellermannTyton stainless steel markers with permanently legible and raised letters and characters. The device is conceived for industrial use. The device is only suitable for indoor use. The device may not be operated in potentially explosive environments.

The device may only be used for the purposes described in these operating instructions.

Markers made of other materials or from other manufacturers may not be used.

The device may only be used in technically perfect condition in accordance with its intended use and the operating instructions, and only by safety-conscious persons who are fully aware of the risks involved in operating the device.

The device may only be repaired or serviced by the manufacturer or a qualified technician using genuine spare parts.

1.5 EC conformity

The device fulfills the requirements in accordance with:

- Machinery Directive 2006/42/EC
- Low Voltage Directive 2006/95/EC
- Directive on the restriction of the use of certain hazardous substances in electrical and electronic equipment 2011/65/EU

1.6 Customer service and spare parts

If you have any questions or suggestions, please contact Hellermann Tyton GmbH in Germany. The contact data is listed at the end of this documentation.

Only use genuine spare parts or spare parts approved by HellermannTyton GmbH in Germany. Contact Customer Services to order the spare parts.

2 Safety instructions


The device was manufactured according to the current state of technology and the recognised safety regulations. Nonetheless, use of the device can result in hazards to the life and limb of the user or third persons, or in damage to the device and other material property.

These operating instructions contain information on safety.

- ▶ Always follow all of the instructions to prevent personal injury, material damage or environmental damage.

2.1 Representation and layout of warning instructions

The warning instructions relate to actions and are structured as follows:

 DANGER
Type and source of danger!
Explanations on the type and source of danger.
▶ Measures to prevent danger.

2.2 Danger grading of warning instructions

The warning instructions are graded according to the severity of their danger. In the following, the danger grading is explained with the corresponding signal words and warning symbols.

 DANGER
Immediate risk of lethal or serious injuries.

 WARNING
Possible risk of lethal or serious injuries.

 CAUTION
Possible slight injuries.

NOTE
Damage to the device or the surroundings.

2.3 Basic safety instructions

The following safety instructions apply generally when handling the device.

Danger of electric shock

A faulty or incorrectly installed power supply line can lead to lethal injuries.

- ▶ Connect the device to a properly installed socket with grounding.
- ▶ Check the voltage (110 V to 240 V AC).
- ▶ The socket must be easily accessible, so that the device can be switched off if necessary.
- ▶ If not used, in event of repairs or maintenance, switch off the device using the main switch and pull out the plug.

Risk of injury

There is a possible risk of injury from rotating components or crushing of limbs when handling the device.

- ▶ Make sure that clothing, hair, jewellery etc. do not come into contact with open rotating components of the device.
- ▶ When closing, only grasp the folding cover by the handle or from the outside.
- ▶ Do not grasp into the swivelling range of the folding cover.

Danger of material damage

Opening the folding cover during operation can cause an undefined standstill of the device.

- ▶ Avoid opening the folding cover during operation.

2.4 Limitations of use

- ▶ Observe the following requirements for the operational environment:
 - The device may only be operated in a dry and low-dust indoor environment.
 - Do not operate the device in potentially explosive environments.

2.5 Operator obligations

The operator must observe and comply with the respectively applicable national legal regulations and accident prevention regulations.

The operator must keep the device in proper condition by performing maintenance measures at regular intervals.

3 Transport and storage

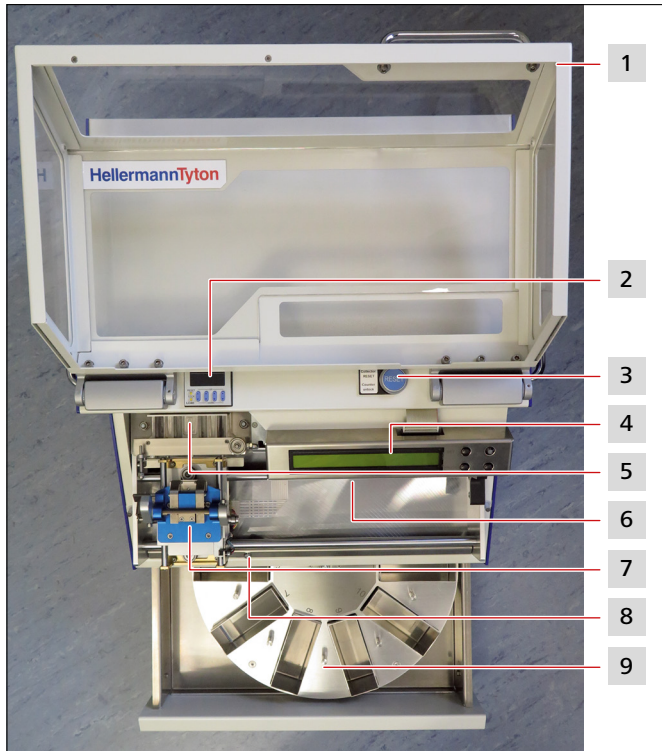
For transport, all of the moving components of the device must be secured. The device may only be transported in the supplied original packaging.

The device must be protected from humidity, direct sunlight and extreme heat. The device may only be stored in dry places that are not exposed to spray water.



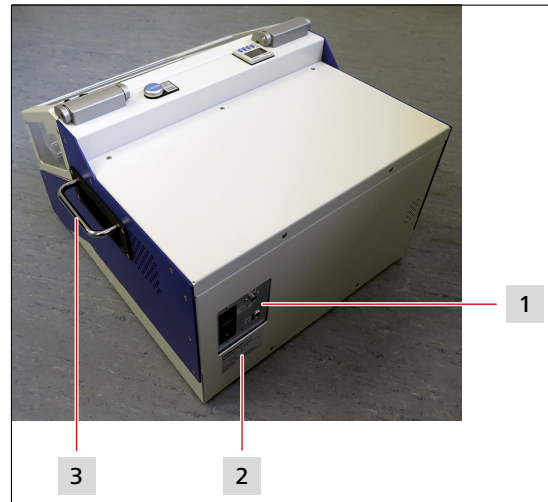
4 Layout and function

4.1 Layout



Front top view of the device.

- 1 Folding cover
- 2 Counter
- 3 Reset button
- 4 Operating display
- 5 Magazine
- 6 Embossing drum
- 7 Gripper
- 8 Pilot lamp
- 9 Organiser unit (Device article-no. 544-21000)



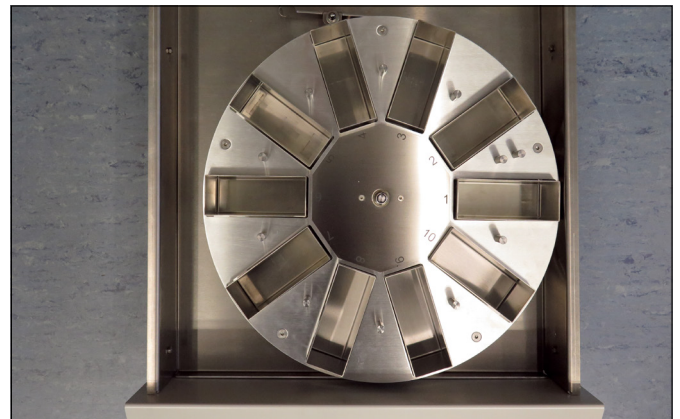
Rear view of the device.

- 1 Connection plate
- 2 Rating plate
- 3 Folding handle

i The upper housing of the device is suitable for setting up a notebook for operating the device.

4.2 Organiser unit (Device 544-21000)

The organiser unit serves to hold embossed markers and has ten numbered boxes. The number of markers per box can be determined using a counter.



Organiser unit (Device 544-21000).

i To prevent overfilling of the organiser unit, the number of embossed markers may not exceed 40 pieces per box.

4.3 Drawer insert (Device 544-20000)

The drawer insert under the embossing mechanism contains a box for holding embossed markers as well as several boxes for holding magazines or materials that are not being used.

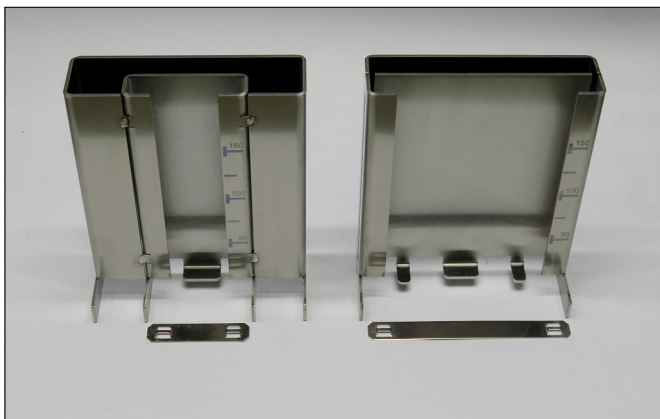


Drawer insert (Device 544-20000).

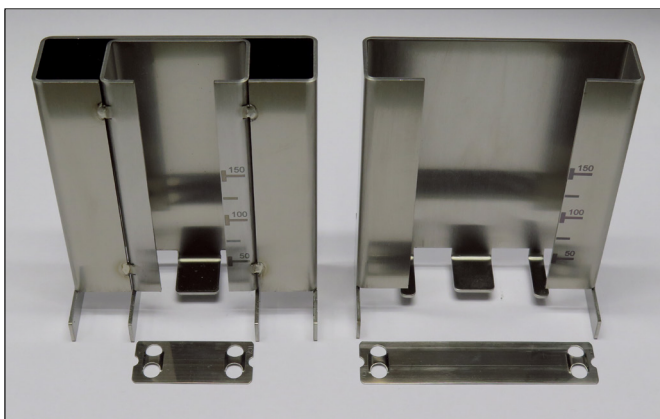
i To prevent overfilling of the drawer, the number of embossed markers may not exceed 100 pieces.

4.4 Magazines

Each magazine has a maximum capacity of approx. 150 non-embossed stainless steel markers. The following magazines are available:



Magazine 10 mm marker (10 x 45 and 10 x 90).

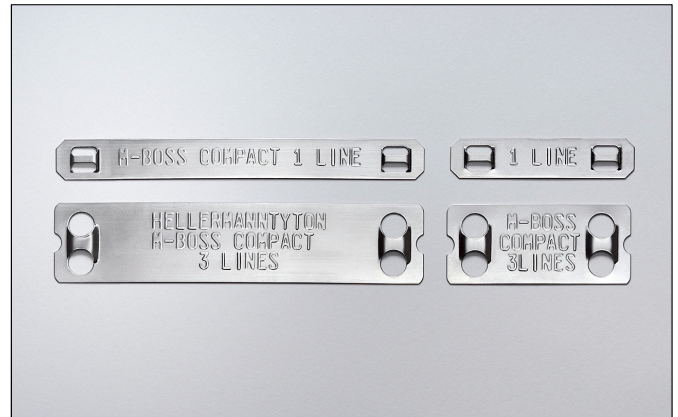


Magazine 20 mm marker (20 x 45 and 20 x 90).

4.5 Stainless steel marker (marker)

The M-BOSS stainless steel markers (simply called "markers" in the following) are made of stainless steel of the type SS316 (SS316) and guarantee good legibility of the characters even under the influence of dust, dirt, grease and oil. The markers are suitable for operating temperatures from -80 °C to +538 °C.

The following markers are available:



Stainless steel marker (marker).

TYPE	Size (mm)	Number of lines	Number of characters per line	Article-No.
MBML10X45	10 x 45	1	8	544-80101
MBML10X90	10 x 90	1	23	544-80102
MBML20X45	20 x 45	3	8	544-80201
MBML20X90	20 x 90	3	23	544-80202

4.6 Operating elements

4.6.1 Operating display

The operating display shows the serial number of the device and the status with a red or green pilot lamp.



Operating display of the device.

Colour	Meaning
Green	Ready for operation
Red	Alarm
Flashing red	Pause mode
Red-green flashing alternately	In operation

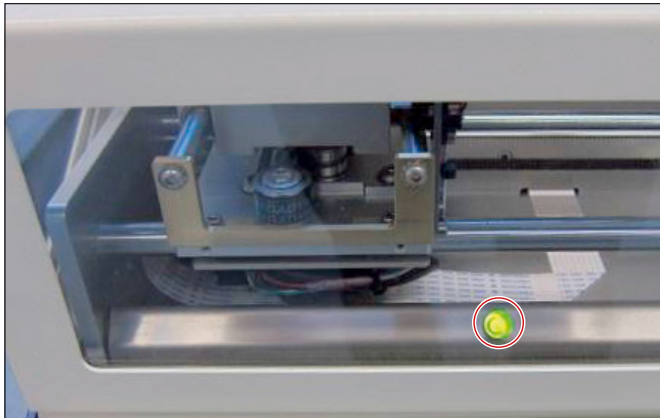
4.6.2 Button functions on the operating display

The device can be operated using the buttons.

Button	Function
SET	Relieving the embossing drum after power failure or unintentional opening of the folding cover
PAUSE	Pauses the operation
CLEAR	Basic position after switching the mains on or after an error

4.6.3 Organiser unit status lamp

The status lamp indicates the status of the organiser unit.

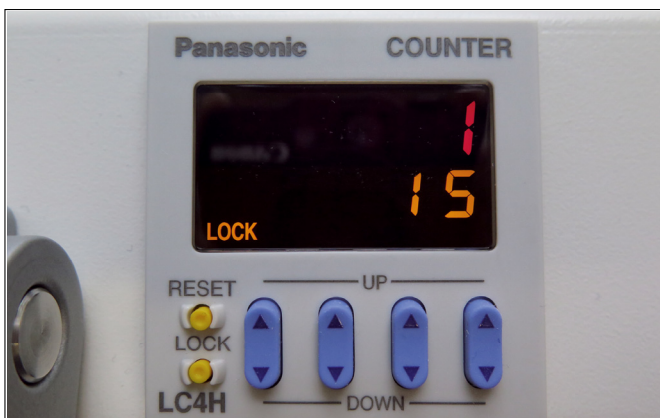


Organiser unit status lamp.

Colour	Meaning
Green	Ready for operation
Red-green flashing alternately	Box 9 is being filled
Red flashing slowly	Box 10 is being filled
Red flashing rapidly	Organiser unit is in movement or the organiser unit is blocked
Red	Box 10 is full

4.6.4 Organiser unit counter

The counter is used to determine the number of markers to be embossed in each box of the organiser unit.



Organiser unit counter.

Line	Meaning
Top line (red)	Actual display of markers per box
Bottom line (yellow)	Target display of markers per box

Button	Meaning
Up/down button	Changing of the target number of markers per box
Reset button	Resetting the actual number of markers per box

i The counter can only be operated when pressing the reset button.

4.6.5 Organiser unit reset button

The reset button is used to operate the organiser unit.



Organiser unit reset button.

Function	Meaning	Operating instructions
Collector reset	Basic position of the organiser unit	Press the reset button 2x within 1 s
Counter unlock	Deactivate the counter button lock	Press and hold the reset button

4.7 Function

The stainless steel markers are designed with the TagPrint Pro software.

The device is controlled by a computer, and takes a blank marker from the magazine and embosses it with up to 69 characters. When the embossing is complete, the device deposits the embossed markers in a drawer.

The stainless steel markers are attached with 4.6 mm wide MBT metal cable ties and the MK9SST tool.

5 Initial operation

The following equipment is required for the start-up of the device:

- PC or notebook with Windows XP®/7®/8®
- Microsoft Office Excel® software

Carry out the start-up in the prescribed sequence:

1. Place the device.
2. Install the drivers.
3. Connect the device.
4. Install the device in the operating system.
5. Install the TagPrint Pro 3.0 software.

→ Section 5.1-5.5

5.1 Device placement

NOTE

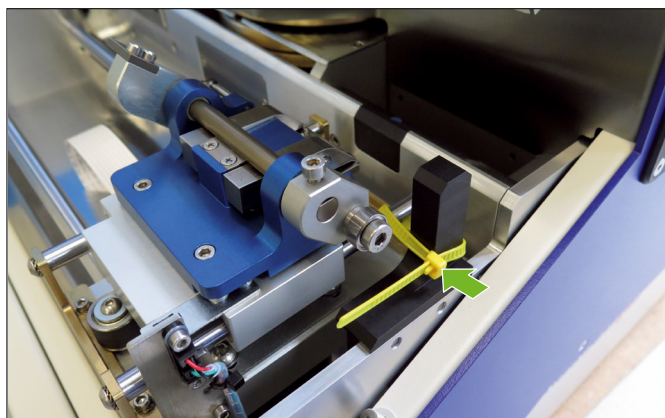
Material damage caused by false environmental conditions!

The device and the materials can be damaged by humidity and dust.

- ▶ Setup the device only in dry places that are not exposed to spray water or dust.

Proceed as follows:

- 1 Lift the device carefully out of the packaging using the folding handles on the sides.
- 2 Place the device on a level and stable surface. (To avoid closing off the ventilation openings, you must keep a clearance of at least 10 cm on all sides of the device.)
- 3 Remove the transport securing devices (cable ties).



Transport securing device.

- 4 Check the device for transport damage.

- 5 Check the delivery for completeness:

- M-BOSS Compact stainless steel embossing system
- Magazine 10 x 45
- Magazine 10 x 90
- Magazine 20 x 45
- Magazine 20 x 90
- Power cable
- USB cable
- CD-ROM with installation programme and operating manual

i Keep the original packaging for later transport.

i If transport damage has been found or if the scope of delivery was incomplete, please contact Customer Service at HellermannTyton.

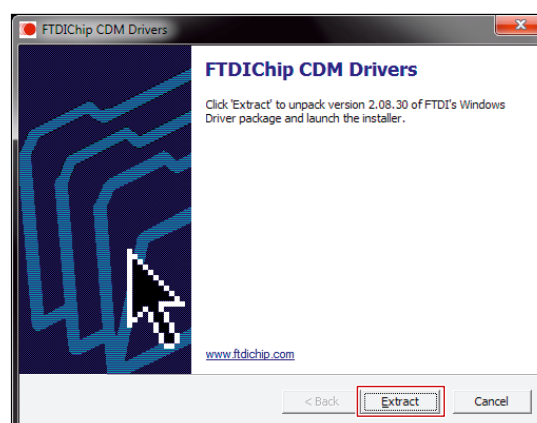
- The device has been setup correctly.

5.2 Installing the drivers

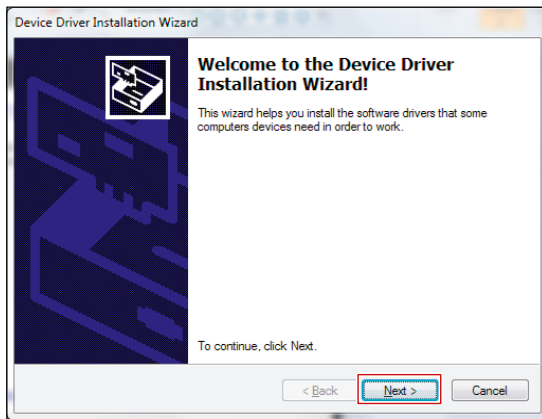
i The screen displays shown serve for orientation. The designation of the buttons and menus is explained in the instruction texts.

Proceed as follows:

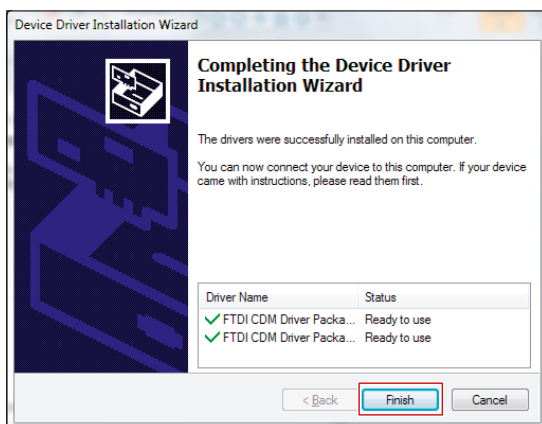
- 1 Insert the CD-ROM.
- 2 Open the USB2COM folder.
- 3 Press on Extract.



4 Press on Next.



5 Press on Finish.



6 Connect the M-BOSS Compact and the PC with the supplied USB cable.



The driver is installed.

5.3 Connect the device

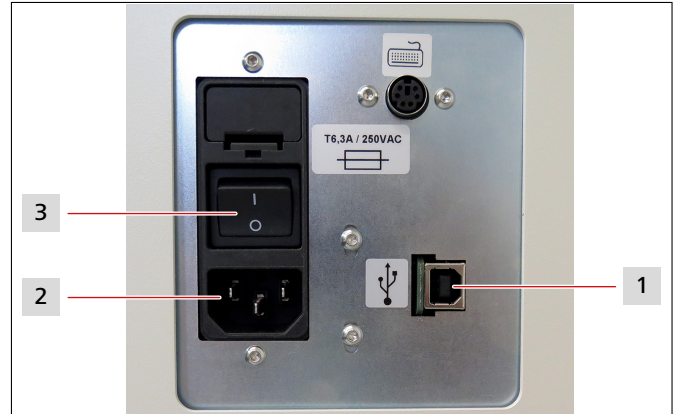


Danger of lethal electric shock!

There is a risk of lethal injury when touching live components.

- ▶ Only connect the device to a properly installed and standardised socket with grounding.
- ▶ Observe the voltage and amperage requirements.
- ▶ Do not touch any of the live components.

Proceed as follows:



Connect the device.

- 1 USB port
- 2 Power supply
- 3 Main switch

- 1 Connect the power cable to the device.
 - 2 Connect the USB cable to the device.
 - 3 Connect the USB cable of the device to the PC or notebook.
 - 4 Connect the power cable of the device to a power socket.
 - 5 Switch on the device using the main switch.
- The device is connected.

5.4 Installing the device in the operating system

The M-BOSS Compact must be installed and set up in the PC or notebook operating system device manager.

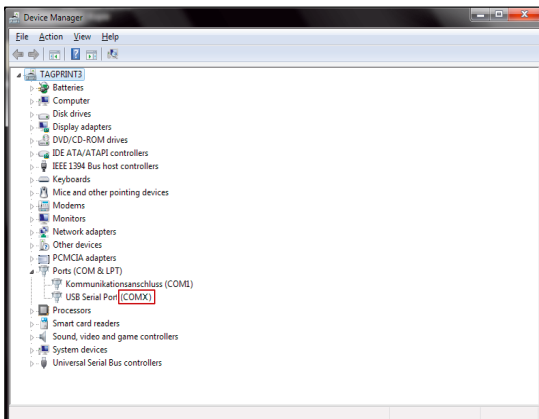


The screen displays shown serve for orientation. The designation of the buttons and menus is explained in the instruction texts.

Proceed as follows:

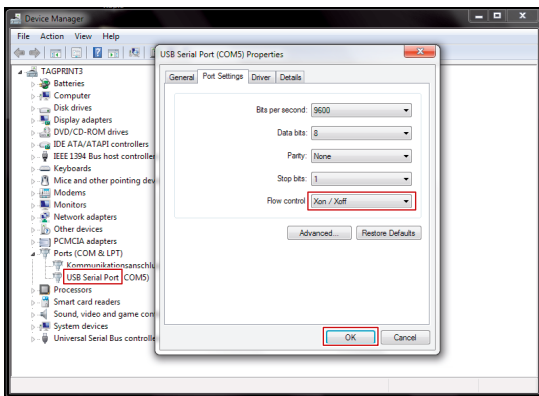
- 1 Start the PC or notebook.
- 2 Open the device manager.

- 3 Check the occupied ports.



- 4 Double-click on USB Serial Port.

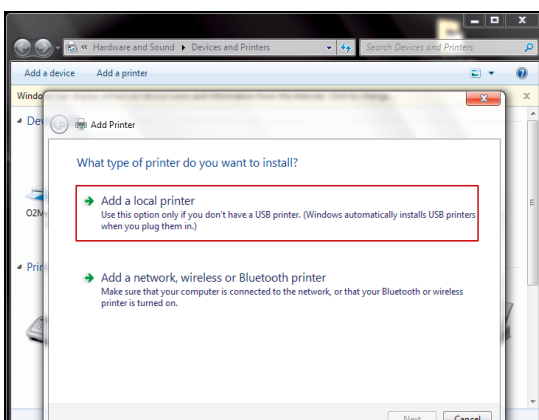
- 5 Select `Xon/Xoff` for the flow control and confirm with OK.



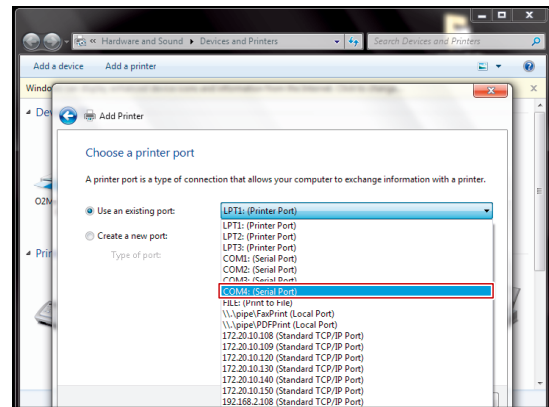
- 6 Open the device and printer menu.

- 7 Select Add printer.

- 8 Select Add a local printer.

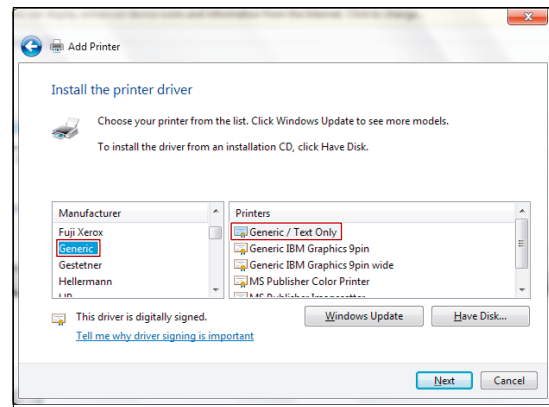


- 9 Select COMxx (xx=serial port from the device manager) and confirm with Next.

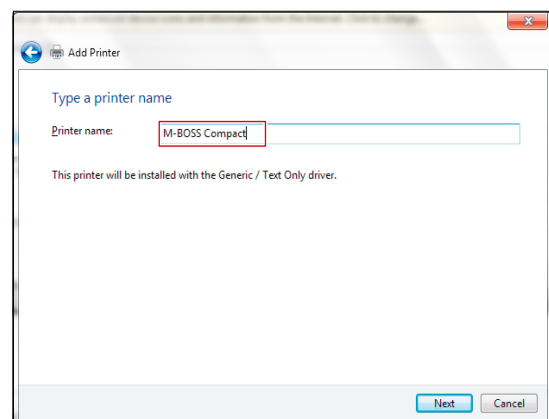


- 10 Select Generic (Default in Windows XP®).

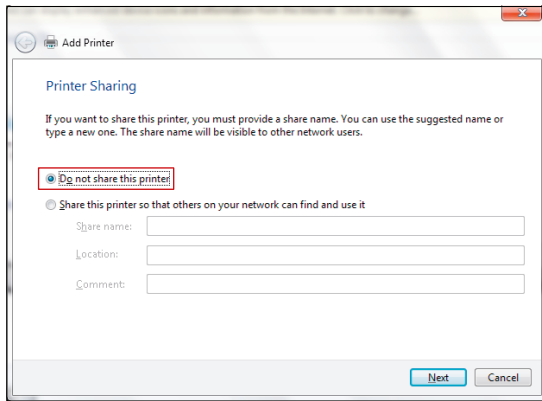
- 11 Select Generic / Text Only and confirm with Next.



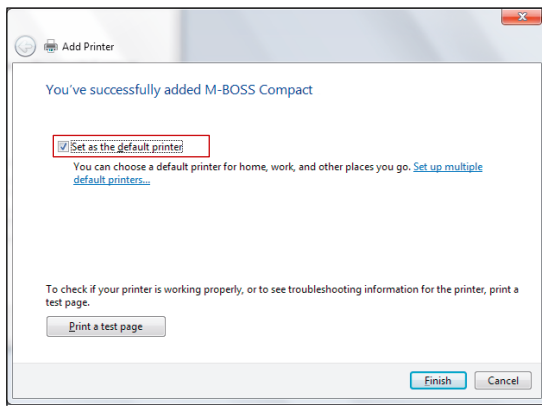
- 12 Enter printer name "M-BOSS Compact" and confirm with Next.



13 Select **Do not share this printer** and confirm with **Next**.



14 Select **Set as the default printer**.



15 Confirm all of the settings with **Finish**.

- The device is installed and set up in the operating system.

5.5 Installing the TagPrint Pro 3.0 software

i The screen displays shown serve for orientation. The designation of the buttons and menus is explained in the instruction texts.

Proceed as follows:

- 1 Insert the supplied CD-ROM into the PC or notebook.
- 2 Install TagPrint Pro 3.0.



- TagPrint Pro 3.0 has been installed and can be used.

6 Operating instructions

The markers are designed with the TagPrint Pro 3.0 software and embossed with the M-BOSS Compact.

The following 45 characters can be used for labelling:

Letters	A B C D E F G H I J K L M N O P Q R S T U V W X Y Z
Numbers	0 1 2 3 4 5 6 7 8 9
Symbols	& - / . , ' Ä Ö Ü

Operation is carried out in the prescribed sequence:

1. Switch on the device.
2. Fill and insert the magazine.
3. Connect the device.
4. Perform single or serial embossing.
5. Remove the marker.

→ Section 5.1-5.5

6.1 Switch on the device

Proceed as follows:

- 1 Switch on the device with the main switch.
 - 2 Wait for the status message **PRESS CLEAR** or **ESC TO CONTINUE** on the display.
 - 3 Press the "CLEAR" button.
- The device moves to its basic position and the status message **READY** appears on the display.

6.2 Filling and inserting the magazine

NOTE

Possible malfunction!

The device operation is stopped and the embossing is interrupted when the folding cover is opened.

- ▶ Only open the folding cover when the device is at a standstill.

NOTE

Material damage caused by false markers!

The device can be damaged by using the wrong markers.

- ▶ Only use stainless steels markers from HellermannTyton.

The magazine must be filled with markers and inserted.

Proceed as follows:

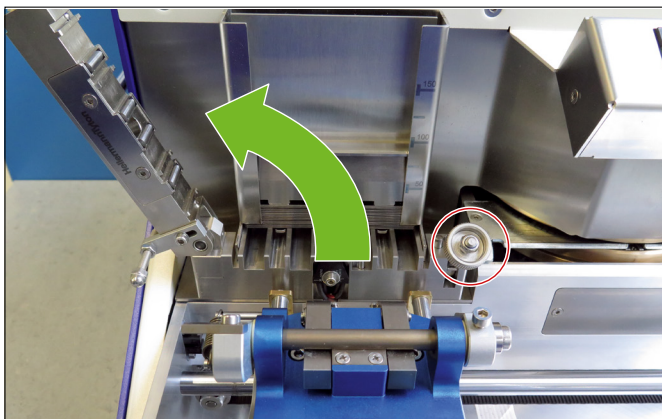
- 1 Open the folding cover.

- 2 Insert the markers into the magazine with the fixing strap to the top.



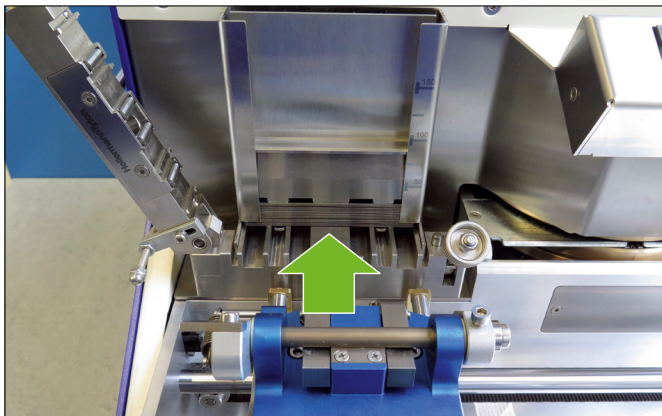
Insert the markers.

- 3 Insert the weight.
 4 Loosen the knurled nut and swivel the locking device away.
 5 Swivel the bridge upwards.



Swivel the bridge upwards.

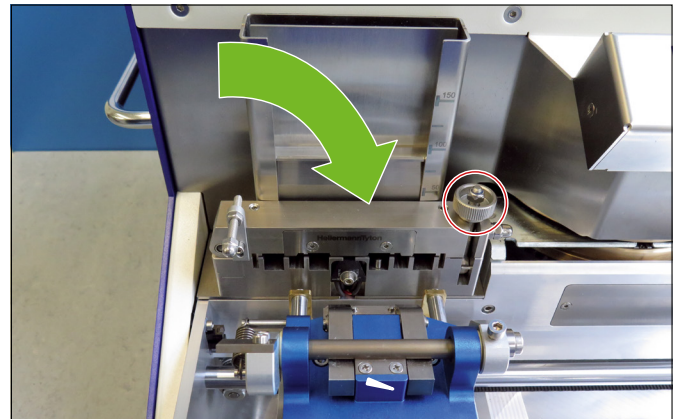
- 6 Insert the magazine and push it up against the rear stop.



Swivel the bridge downwards.

- 7 Swivel the bridge back down.

- 8 Swivel the locking device back and tighten the knurled nut by hand.



Close the folding cover.

- 9 Close the folding cover.
 The magazine has been filled and inserted.

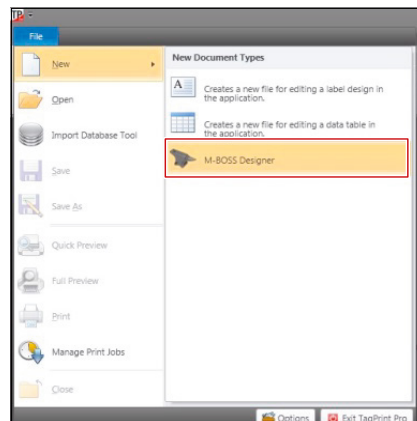
6.3 Performing a single embossing

i The screen displays shown serve for orientation. The designation of the buttons and menus is explained in the instruction texts.

The markers are designed using the TagPrint Pro 3.0 software.

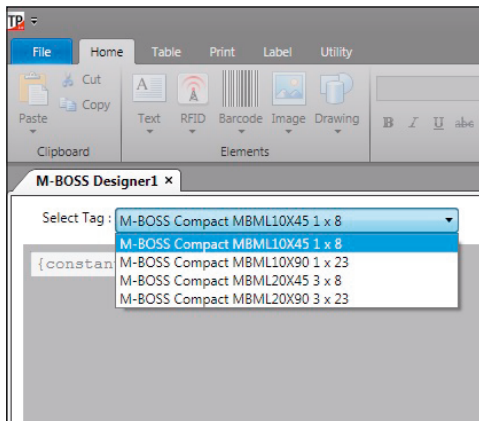
Proceed as follows:

- 1 Start the TagPrint Pro 3.0 software on the PC or notebook.
- 2 Open a new file in M-BOSS Designer.

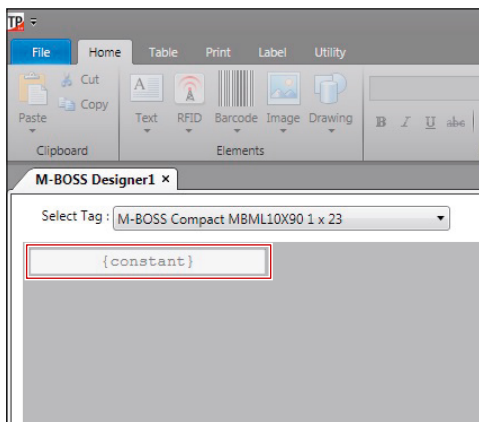


Operating instructions

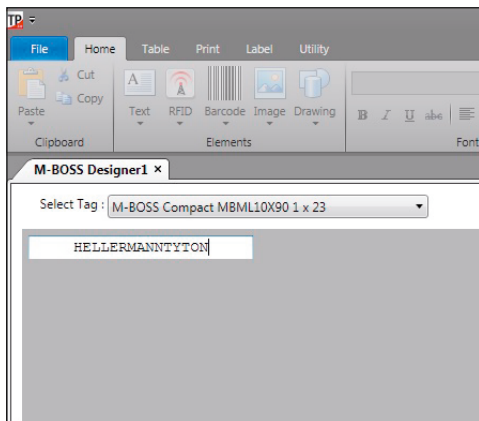
3 Select the desired marker size.



4 Double-click in the {constant} input area.

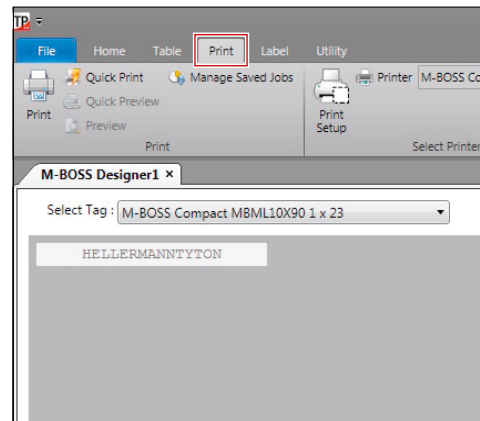


5 Enter the embossing text.

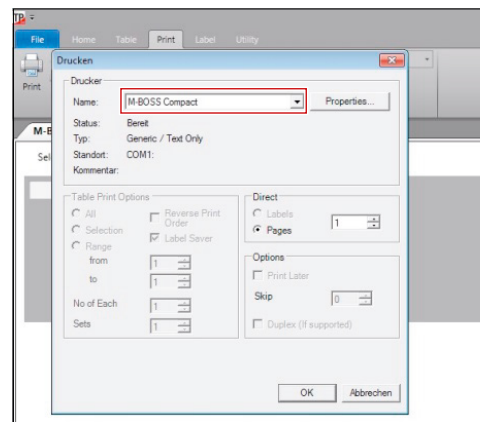


6 Confirm the embossing text by clicking outside of the input area.

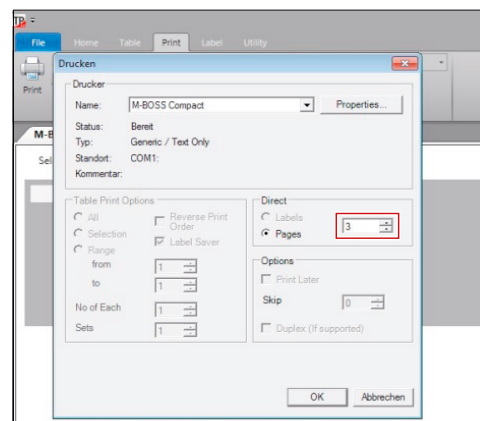
7 Open the printing menu.



8 Select "M-BOSS Compact" as a printer.



9 Select the number of copies (Pages) and confirm with OK.



The embossing process starts.

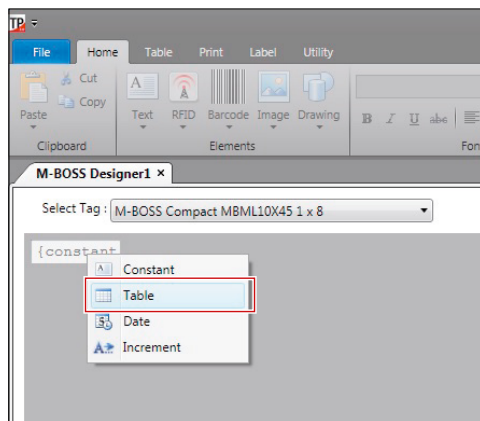
6.4 Performing serial embossing

i The screen displays shown serve for orientation. The designation of the buttons and menus is explained in the instruction texts.

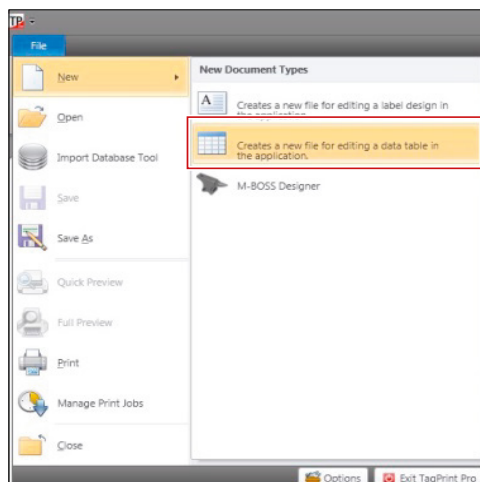
The markers are designed using the TagPrint Pro 3.0 software.

Proceed as follows:

- 1 Start the TagPrint Pro 3.0 software on the PC or notebook.
- 2 Open a new file in M-BOSS Designer.
- 3 Right-click on the {constant} input area and select Table.



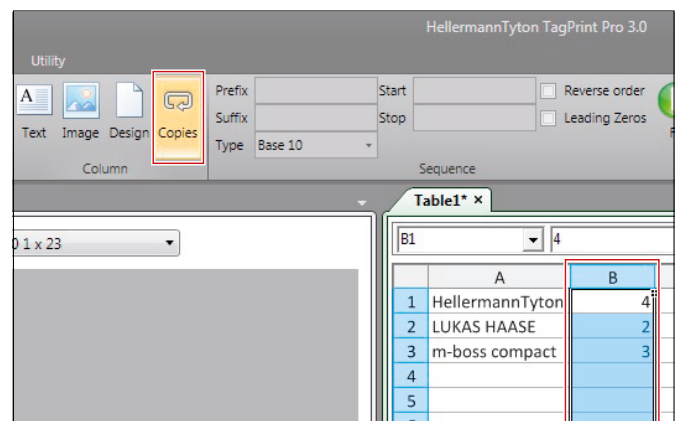
- 4 Create a new table.



- 5 Enter the embossing text in Column A and the number of copies in Column B.

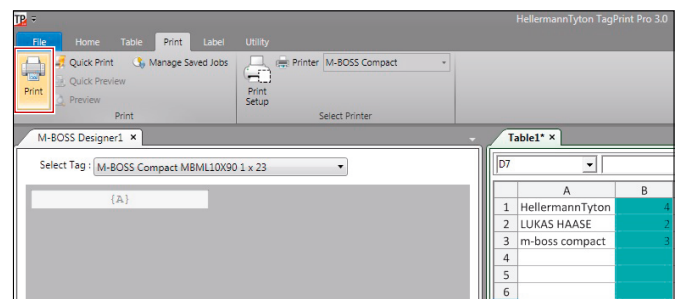
	A	B	C
1	HellermannTyton	4	
2	LUKAS HAASE	2	
3	m-boss compact	3	
4			
5			
6			
7			
8			

- 6 Mark Column B and activate Copies in the menu bar.



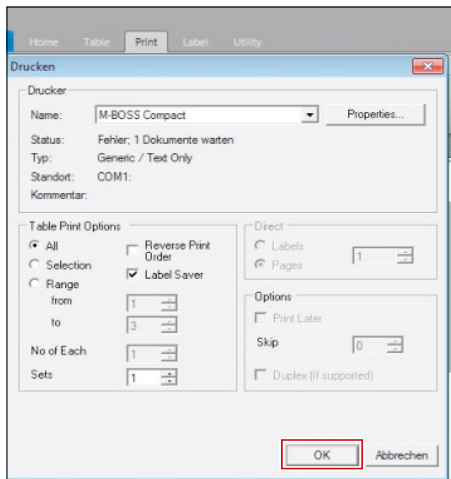
i Column B remains marked.

- 7 Activate Print in the menu bar.



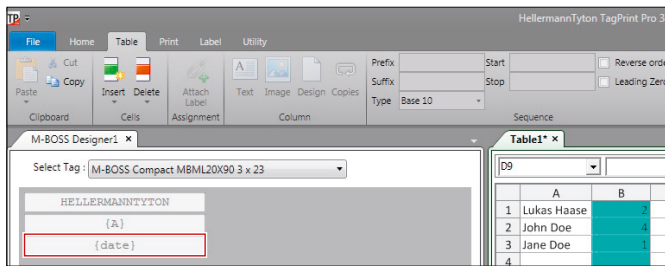
GB
DE
FR
ES
PT
IT
NL
DK
NO
SE
FI
PL
CZ
HU
SI
RO
TR

- 8 Select "M-BOSS Compact" as the printer and confirm with OK.



- The serial embossing process starts.

With serial embossing, you can also enter other information and combinations in the table (e.g., date).



6.5 Removing the marker

- ▶ Remove the embossed marker by emptying the drawer.
- ▶ Pay attention to the version of the device.

6.5.1 Emptying the drawer (Article-No. 544-20000)

The drawer cannot be opened during operation.

Proceed as follows:

- 1 Wait for standstill or press the "PAUSE" button on the operating display.
- 2 Carefully pull out the drawer.
- 3 Empty the drawer.
- 4 Reinsert the drawer.
- 5 Press the "PAUSE" button on the operating display.
- 6 Press the "CLEAR" button on the operating display.

- Operation will be resumed.

6.5.2 Emptying the organiser unit (Article-No. 544-21000)

The drawer can be pulled out and emptied during operation.

Proceed as follows:

- 1 Carefully pull out the drawer.
- The device goes into "PAUSE" operating mode.
- 2 Empty the drawer.
- 3 Reinsert the drawer.
- 4 Press the "PAUSE" button on the operating display.
- 5 Press the "CLEAR" button on the operating display.

- Operation will be resumed.

7 Troubleshooting

The following tables help to find possible errors and causes as well as measures to perform fault repairs.

7.1 Marker errors

Error	Cause	Remedy
Inversed embossing on the marker	Markers not properly inserted in the magazine	Check the magazine filling
Single marker blockage	Marker is bent or twisted	Replace the marker
Markers upright in the magazine	Low number of pieces, markers run without weight	Refill the magazine, insert weight
Abnormal type face on the marker	Wrong pairing of the embossing job and markers	Check the pairing of the embossing job and markers

7.2 Device errors

Error	Cause	Remedy
Crooked embossing	The markers are crooked in the gripper, marker hard to pull out, gripper does not close properly	Check the marker for damage, adjust the gripper
Error code E03 PLAID NOT LOAD	The marker was not pulled out of the singling unit	Remove the marker from the singling unit
Error code E04 X-MOTOR ERROR (X-HOME)	Carriage is blocked towards the magazine	Open the working area, remove any foreign objects, lubricate the guide rod
Error code E06 X-MOTOR ERROR (X-END)	Carriage is blocked towards the ejector or during embossing	Open the working area, remove any foreign objects, remove any incorrectly embossed markers
Error code E07 DRUM MOTOR ERROR	Restricted movement of the embossing drum	Open the working area, check the embossing drum and relieve if necessary
Error code E08 PUNCH MOTOR ERROR	Restricted punching drive	Relieve the embossing drum or close the unintentionally opened folding cover
Error code E48 COVER OPEN ERROR	Open the folding cover	Close the folding cover, press the "CLEAR" button
Error code E65 PUSHER ERROR	The movement of the pusher in the singling unit is restricted	Open the singling unit, remove any foreign objects or bent markers
No screen or LED display	No power supply, power input fuse defective	Check the power cable and connection, replace the power input fuse

7.3 Software errors

Error	Cause	Remedy
Shifted type face	Incorrect embossing coordinates	Check the embossing coordinates and correct if necessary
Wrong embossed text on the marker	Wrong link to the Excel table	Check and re-link the Excel table

7.4 Organiser unit errors

Error	Cause	Remedy
The device stops or does not start up	Open the organiser unit	Close the organiser unit, press the "PAUSE" and "CLEAR" buttons
	The device goes into "PAUSE" operating mode	Press the "PAUSE" and "CLEAR" button
Red status lamp flashing rapidly	Organiser unit is blocked	Open the organiser unit, remove the blockage, close the organiser unit, press the "PAUSE" and "CLEAR" buttons
The device stops without finishing the embossing job, the status lamp is red	The organiser unit was not reset before the embossing job	Open the organiser unit, empty any filled boxes, close the organiser unit, press the "PAUSE" and "CLEAR" buttons

8 Maintenance

The following warning instructions apply for all maintenance work.

⚠ DANGER

Danger of lethal electric shock!

There is a risk of lethal injury when touching live components.

- ▶ Switch off the device before maintenance work.
- ▶ Pull the power plug out of the socket.

⚠ CAUTION

Risk of injury from improper work!

Safe working on the device requires specialised knowledge. Improperly performed maintenance work can cause injuries.

- ▶ Perform maintenance work professionally.
- ▶ If necessary, have the maintenance performed by an authorised specialised technician.

NOTE

Material damage caused by improper work!

Safe working on the device requires specialised knowledge. Improperly performed maintenance work can cause damage to the device.

- ▶ Perform maintenance work professionally.
- ▶ If necessary, have the maintenance performed by an authorised specialised technician.

Maintenance serves to preserve operational readiness and to prevent premature wear.

Maintenance is divided into:

- Maintenance and cleaning
- Service

8.1 Preparation and follow-up tasks

For all maintenance work, proceed as follows:

- 1 Switch off the device using the main switch.
- 2 Pull the power plug out of the socket.
- The device is without current.
- 3 Perform the required maintenance.
- 4 Insert the mains plug into the socket.
- 5 Switch on the device using the main switch.
- The device is ready for operation.

8.2 Maintenance and cleaning

8.2.1 Regular maintenance work

To ensure proper operational status of the device, defined maintenance work must be performed at the prescribed intervals.

- ▶ With daily use, perform the following regular maintenance work.

Interval	Maintenance work
Weekly	Check the working area for strong soiling.
	Check the bolts and cable connections for tightness.
Monthly	Clean the light sensors and light barriers.
	Clean and lubricate the guide rods.
	Clean the working area and drawer.
Annually	Clean the exterior housing.
	Clean the inside of the folding cover.

8.2.2 Cleaning agents and materials

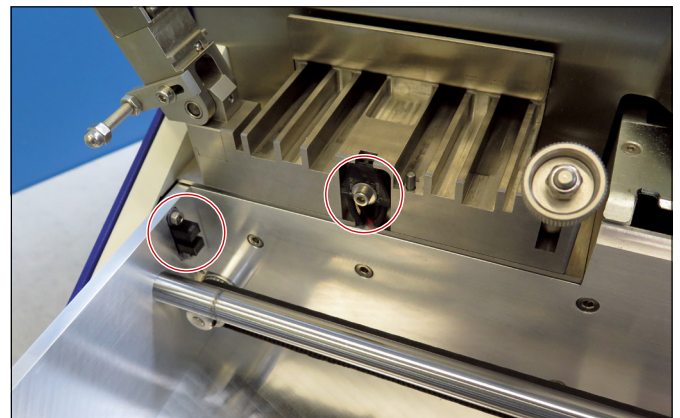
The following cleaning agents and materials are required for maintaining the device:

- Mild cleaning agents
- Lint-free cloth
- Dry brush
- CRC 5-56 Multifunction oil (Article-No. 935-10018)

8.2.3 Cleaning the light sensors and light barriers

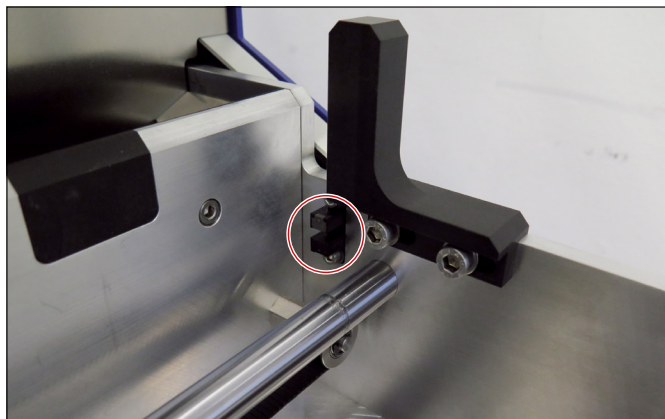
Proceed as follows:

- 1 Open the folding cover.
- 2 Swivel the bridge upwards.
- 3 Clean the light sensor and X-Home light barrier with a dry brush.



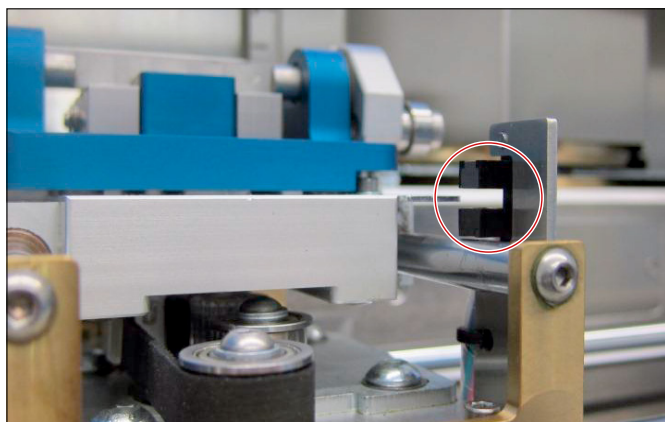
Light sensor and X-Home light barrier.

- 4 Clean the X-End light barrier with a dry brush.



X-End light barrier.

- 5 Clean the Y-carriage light barrier with a dry brush.



Y-carriage light barrier.

- 6 Swivel the bridge back down.
- 7 Close the folding cover.
- The light sensors and light barriers are clean.

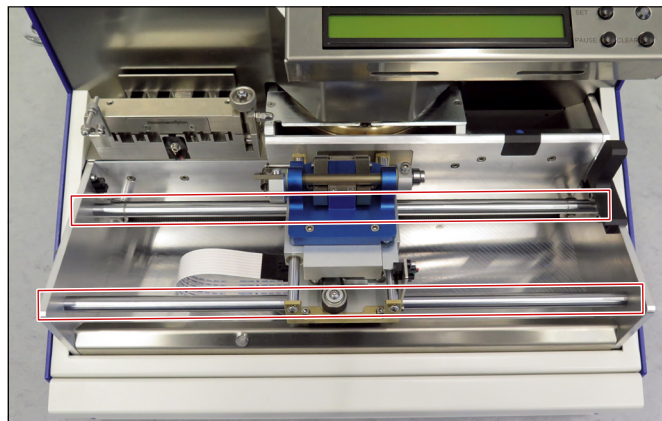
8.2.4 Cleaning and lubricating the guide rods

Proceed as follows:

- 1 Open the folding cover.

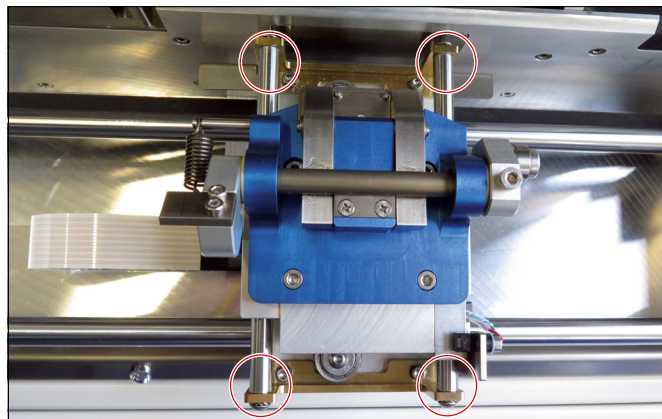
i The X- and Y-carriages can be slowly moved by hand.

- 2 Clean the X-carriage guide rod with a lint-free cloth.



X-carriage guide rod.

- 3 Clean the Y-carriage guide rod with a lint-free cloth.



Y-carriage guide rod.

- 4 Using a lint-free cloth, apply a thin coat of multifunction oil on the guide rods of the X- and Y-carriages.
- 5 Swivel the bridge back.
- 6 Close the folding cover.
- The guide rods are clean and lubricated.

GB
DE
FR
ES
PT
IT
NL
DK
NO
SE
FI
PL
CZ
HU
SI
RO
TR

8.2.5 Cleaning the working area and drawer

Proceed as follows:

- 1 Open the folding cover.
 - 2 Clean the working area with a lint-free cloth and a mild cleaning agent.
 - 3 Close the folding cover.
 - 4 Open the drawer.
 - 5 Clean the drawer with a lint-free cloth and a mild cleaning agent.
 - 6 Close the drawer.
 - 7 Insert the mains plug into the socket.
 - 8 Switch the device on again using the main switch.
- The working area and drawer are clean.

8.2.6 Cleaning the exterior housing

Proceed as follows:

- ▶ Clean the exterior housing of the device with a lint-free cloth and a mild cleaning agent.
- The housing exterior is clean.

8.2.7 Cleaning the inside of the folding cover

Proceed as follows:

- 1 Open the folding cover.
 - 2 Clean the inside of the folding cover with a lint-free cloth and water or a mild cleaning agent.
 - 3 Close the folding cover.
 - 4 Insert the mains plug into the socket.
 - 5 Switch the device on again using the main switch.
- The inside of the folding cover is clean.

8.3 Service

Servicing includes the repair and replacement of components. It is only necessary when components have been misaligned or damaged by external influences.

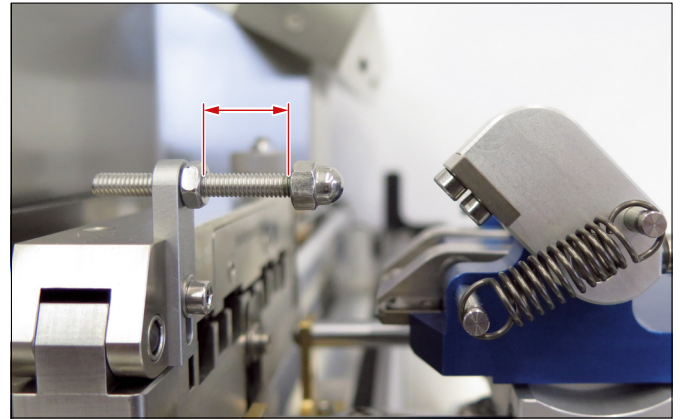
8.3.1 Adjusting the gripper

If the marker is not correctly positioned in the gripper, the closing of the gripper can be adjusted using the stop bolt.

Proceed as follows:

- 1 Open the folding cover.

- 2 Increase or decrease the distance of the stop bolt in small increments.



Distance of the stop bolt.

- Small distance: the gripper closes later
- Large distance: the gripper closes earlier

- 3 Close the folding cover.
- The gripper closes properly again.

8.3.2 Relieving the embossing drum

In case of unintentional opening of the folding cover, power outages or blockage of the embossing drum, the embossing process can stop unexpectedly.

Proceed as follows:

- 1 Switch off the device using the main switch.
 - 2 Open the folding cover.
 - 3 Perform a visual check for foreign objects.
 - 4 Remove any foreign objects.
 - 5 Close the folding cover.
 - 6 Switch on the device with the main switch.
 - 7 Press the "SET" button on the operating display.
 - 8 Press the "CLEAR" button on the operating display.
- The device moves to its basic position.

8.3.3 Replacing the power input fuse

Proceed as follows:

- 1 Pull out defective power input fuses with a flat-bladed screwdriver.



Replacing the power input fuse.

- 2 Insert the corresponding replacement fuse.
- The device can be switched on again.

9 Taking out of operation

⚠ DANGER

Danger of lethal electric shock!

There is a risk of lethal injury when touching live components.

- ▶ Switch off the device before maintenance work.
- ▶ Pull the power plug out of the socket.

9.1 Taking the device out of operation

Proceed as follows:

- 1 Switch off the device using the main switch.
 - 2 Pull the power plug of the device out of the socket.
 - 3 Shut down the PC or notebook.
 - 4 Disconnect the USB cable from the PC or notebook.
 - 5 Disconnect the USB cable from the device.
 - 6 Disconnect the power cable from the device.
- The device is stopped.

9.2 Putting the device back into operation


Proceed as follows:

- 1 Start the PC or notebook.
 - 2 Connect the power cable to the device.
 - 3 Connect the USB cable to the device.
 - 4 Connect the USB cable of the device to the PC or notebook.
 - 5 Connect the power cable of the device to a power socket.
 - 6 Switch on the device using the main switch.
- The device is ready for operation.

10 Disposal

After termination of use, the purchaser or the operator must properly dispose of the device including the accessories.

The purchaser or the operator releases HellermannTyton GmbH from the obligations according to paragraph 10 passage 2 of the German Electrical and Electronic Equipment Act (Return obligation of the manufacturer) and from any associated third-party claims.

-  This device was manufactured according to the current environmental protection standards. The materials can be separated and recycled.
- ▶ Observe the national regulations for the disposal of recyclable fractions, electronic parts and batteries.
 - ▶ Do not dispose of the device with domestic waste.
 - ▶ Bring the device to a local collection point or recycling centre.
 - ▶ If necessary, contact your local officials.

11 Technical data

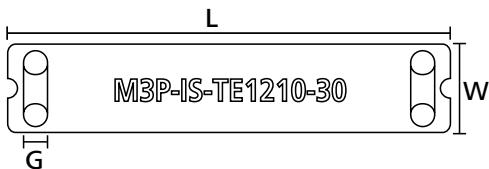
11.1 M-BOSS Compact

TYPE	Pack cont.	Article-No.
M-BOSS Compact	1	544-20000
M-BOSS Compact and Organiser	1	544-21000

Printing method	Relief
Cycle time	1 second per character
Power supply	230 V 50/60 Hz
Rated input voltage	110 - 240 V AC
Maximum rated input power	240 W
Input fuse	T6.3 A/250 V AC
Operating time	8 - 10 h
Interfaces	USB 2.0
System requirements	MS Windows XP SP3, Vista SP1, Win7, Win8
Dimensions (W x H x D)	480 x 360 x 570 mm
Folding cover open	490 - 670 mm
Drawer pulled out	1,000 mm
Weight	41 kg
Specification	CE

11.2 Stainless steel marker

MATERIAL	Stainless steel, type SS316 (SS316)
Operating temperature	-80 °C to +538 °C



Dimensions of the stainless steel markers

TYPE	Max. strap width (G)	Number of lines	Number of characters per line	Number of characters	Width (W)	Length (L)	Pack cont.	Article-No.
MBML10X45	4.6	1	8	8	10.0	45.0	1,000	544-80101
MBML10X90	4.6	1	23	23	10.0	90.0	500	544-80102
MBML20X45	4.6	3	8	24	20.0	45.0	1,000	544-80201
MBML20X90	4.6	3	23	69	20.0	90.0	500	544-80202

All measurements in mm. We reserve the right to make technical changes without notice. Minimum order quantities (MOQ) can deviate from the package contents.