

Low profile cable ties for electrical installation

Out-side serrated cable ties of 9 mm width and fixing elements





Cable Ties and Fixings

Cable Ties Outside Serrated

Cable ties with low profile head

These ties are particularly useful in areas with restricted space. The low profile design ensures that nothing snags on the heads. The outside serration of the tie with its smooth surface to the bundle avoids any damages to the insulation.

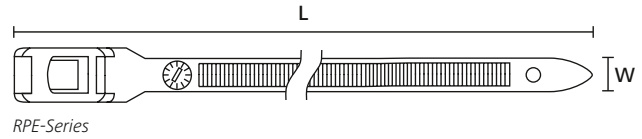
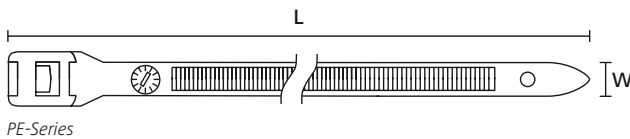
Features and benefits

- Outside serrated cable tie with a smooth surface to the bundle
- Broad contact area with the bundle minimises risk of damage
- Low profile head for ideal use in restricted spaces
- Parallel entry for optimal fit around circular bundles



Low profile cable ties, RPE- and PE-Series.

MATERIAL	Polyamide 6.6, heat stabilised (PA66HS)	Polyamide 6.6, heat and UV-resistant (PA66HSW)
Operating Temperature	-40 °C to +105 °C	
Flammability	UL 94 V2	



PE-Series coloured

TYPE	Width (W)	Length (L)	Bundle Ø max.		Material	Colour	Pack Cont.	Article-No.
PE180	9.0	180.0	42.0	445	PA66HS	Black (BK)	100 pcs.	112-18061
PE530	9.0	535.0	146.0	445	PA66HSW	Black (BK)	100 pcs.	112-53060

All dimensions in mm. Subject to technical changes.
Minimum Order Quantity (MOQ) may differ from package content. Other packaging options may also be available.

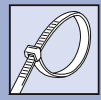
RPE-Series releasable

TYPE	Width (W)	Length (L)	Bundle Ø max.		Material	Colour	Pack Cont.	Article-No.
RPE275	9.0	275.0	69.0	445	PA66HS	Black (BK)	100 pcs.	112-00005
RPE350	9.0	350.0	92.0	445	PA66HSW	Black (BK)	100 pcs.	112-00006

All dimensions in mm. Subject to technical changes.
Minimum Order Quantity (MOQ) may differ from package content. Other packaging options may also be available.



Please note! Not all products listed on this page may have this approval. Please check our website for latest approvals.



Cable ties with low profile head

LPH-Series

LPH cable ties are made of Polyamide 6.6 materials. The design with its serration on the outside provides a smooth surface to the bundle. Any damage to the insulation can be avoided. The flat head is ideal in areas with restricted space. They are mainly used within the electrical industry but the tough design is perfectly suited to a variety of indoor and outdoor applications.

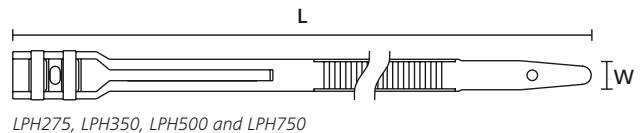
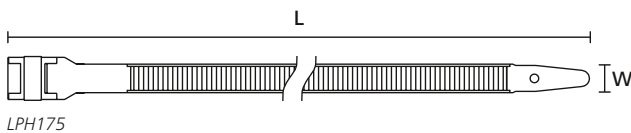
Features and benefits

- High impact modified cable ties are also available.
- Good tensile strength with a single - or a double bridged head.
- Outside serration allows for a smooth surface to the bundle.
- Design protects against damage to cable insulation.
- Low profile head for optimised use especially in restricted spaces.
- Strap is threaded parallel through the low profile head.



LPH-Series with a smooth surface to the bundle.

MATERIAL	Polyamide 6.6 (PA66)	Polyamide 6.6, high impact modified, scan black (PA66HIR(S))
Operating Temperature	-40 °C to +85 °C	
Flammability	UL 94 V2	



TYPE	Width (W)	Length (L)	Bundle Ø max.	N	Material	Colour	Pack Cont.	Article-No.
LPH175	9.0	175.0	40.0	310	PA66	Black (BK)	100 pcs.	112-00203
LPH275	9.0	265.0	62.0	480	PA66HIR(S)	Black (BK)	100 pcs.	112-00303
LPH350	9.0	355.0	92.0	480	PA66HIR(S)	Black (BK)	100 pcs.	112-00403
LPH500	9.0	505.0	140.0	540	PA66HIR(S)	Black (BK)	100 pcs.	112-00033
LPH750	9.0	752.0	220.0	540	PA66HIR(S)	Black (BK)	100 pcs.	112-00034

All dimensions in mm. Subject to technical changes.
Minimum Order Quantity (MOQ) may differ from package content. Other packaging options may also be available.



Please note! Not all products listed on this page may have this approval. Please check our website for latest approvals.



Cable Ties and Fixings

Cable Ties Outside Serrated

Cable ties with low profile head

Robusto-Series

Robusto cable ties manufactured from PA11 have many technical features making them suitable for use in a variety of applications to fix and support cables, pipes and other elements. They offer an excellent resistance to chemicals in most challenging environments like offshore or on oil rigs and construction vehicles. In addition the very good UV resistance makes it a perfect choice for solar panel cable installations.

Features and benefits

- Made of Polyamide 11 – a sustainable bioplastic from vegetable oil
- Outside serrated cable tie with an innovative rounded head design
- Low insertion force for tool-free application
- High tensile strength with a single or a double bridged head
- Soft material for easy handling without damaging cables
- Very good UV resistance and durability in outdoor applications
- Stable technical performance even at very low temperatures
- Offers limited resistance to acids, bases and oxidising agents
- Low water absorption rate for consistent technical performance and high durability
- Prelocking function by simply pushing the strap through the eyelet provided

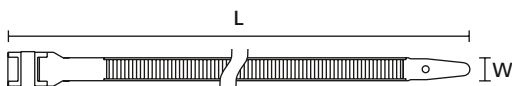


Flat head cable tie from sustainable bioplastic, Robusto-Series.

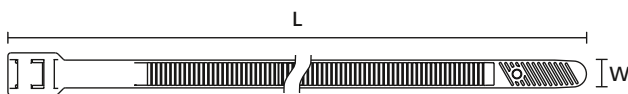
MATERIAL	Polyamide 11 (PA11)
Operating Temperature	-40 °C to +85 °C
Flammability	UL 94 HB



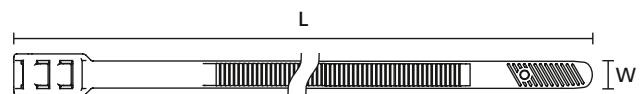
Application video:
Robusto



Robusto (LPH922)



Robusto (LPH942)



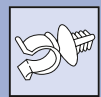
Robusto (LPH962, LPH992)

TYPE	Width (W)	Length (L)	Bundle Ø max.	N	Material	Colour	Pack Cont.	Tools	Article-No.
Robusto (LPH922)	9.0	123.0	22.0	310	PA11	Black (BK)	100 pcs.	1;3;9-12	112-00025
Robusto (LPH942)	9.0	180.0	42.0	360	PA11	Black (BK)	100 pcs.	1;3;9-12	112-00011
Robusto (LPH962)	9.0	260.0	62.0	530	PA11	Black (BK)	100 pcs.	1;3;9-12	112-00012
Robusto (LPH992)	9.0	355.0	92.0	530	PA11	Black (BK)	100 pcs.	1;3;9-12	112-00013

All dimensions in mm. Subject to technical changes.
Minimum Order Quantity (MOQ) may differ from package content. Other packaging options may also be available.



Please note! Not all products listed on this page may have this approval. Please check our website for latest approvals.



Fixing Base

LOK-Series

The LOK mounts, in conjunction with a cable tie, can be used either indoors or outdoors for a diverse range of applications from holding climbing plants, to securing cables running between buildings.

Features and benefits

- LOK01 - LOK05 usable with any cable ties up to 9 mm wide
- Suitable for a wide range of materials, including concrete, brick, block and wood
- Installed by knocking into 7 mm or 8 mm diameter hole
- LOK01B is designed for soft brickwork and 6 mm holes
- Elongated head of LOK05 for setting bundles at a distance from brickwork



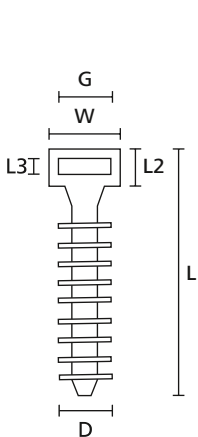
LOK01 fixing bases for indoor and outdoor use.



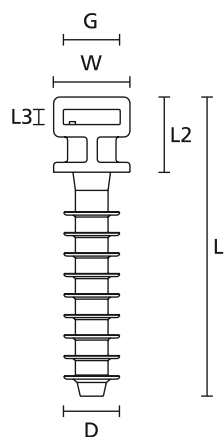
The whole LOK-Series can ideally be combined with cable ties up to 9 mm cable tie width.

MATERIAL	Polyamide 6, high impact modified (PA6HIR)	Polyamide 11 (PA11)
Operating Temperature	-40 °C to +80 °C	-40 °C to +85 °C
Flammability	UL 94 HB	

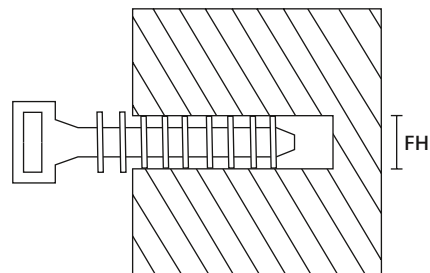
RoHS



LOK01 fixing base (front view)



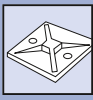
LOK05 fixing base (front view)



LOK01 pushed into a wall bore hole.

TYPE	Width (W)	Length (L)	Length (L2)	Length (L3)	Ø (D)	Strap Width max. (G)	Hole Ø (FH)	Material	Colour	Article-No.
LOK01B	12.0	30.0	6.5	2.5	7.2	9.0	6,0	PA6HIR	Black (BK)	151-80500
LOK01S	12.0	34.0	6.5	2.5	9.2	9.0	7,0 - 8,0	PA6HIR	Black (BK)	151-80600
LOK01	12.0	44.0	6.5	2.5	9.2	9.0	7,0 - 8,0	PA11	Black (BK)	151-01277
	12.0	44.0	6.5	2.5	9.2	9.0	7,0 - 8,0	PA6HIR	Black (BK)	151-80110
LOK05	12.0	49.0	12.5	2.5	9.2	9.0	7,0 - 8,0	PA6HIR	Black (BK)	151-80700

All dimensions in mm. Subject to technical changes.



Cable Ties and Fixings

Cable Tie Mounts

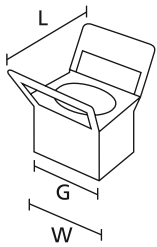
Fixing Base

LOK02

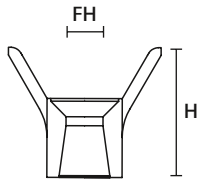
Designed specifically for holding heavier cable bundles these mounting bases can be used in many industries from agriculture to truck manufacturing. LOK cable tie mounts offer a very secure fixing and can be used in combination with cable ties up to 9 mm width.

Features and benefits

- Special design of fixing base gives additional support to cables
- Simple to install with a screw or bolt
- Excellent security, particularly in areas of high vibration



LOK02 Fixing Base



LOK02 Fixing Base (front view)



LOK02 fixing base application.

MATERIAL	Polyamide 6, high impact modified (PA6HIR)
Operating Temperature	-40 °C to +80 °C
Flammability	UL 94 HB



TYPE	Width (W)	Length (L)	Height (H)	Hole Ø (FH)	Strap Width max. (G)	Material	Colour	Article-No.
LOK02	14.0	21.0	18.0	5,1	9.0	PA6HIR	Black (BK)	151-80210

All dimensions in mm. Subject to technical changes.

LOK04-Series, Spacer for parallel Routing

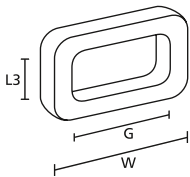
The LOK04 spacer is ideal whenever two or more cables are routed in parallel.

Features and benefits

- For routing bundles over a distance in parallel
- Can be used with cable ties up to 9 mm cable tie width



LOK04 ring for parallel routing.



LOK04

MATERIAL	Polyamide 6.6 (PA66)
Operating Temperature	-40 °C to +85 °C
Flammability	UL 94 V2



TYPE	Width (W)	Length (L3)	Strap Width max. (G)	Material	Colour	Article-No.
LOK04	16.0	4.0	9.0	PA66	Black (BK)	151-80400

All dimensions in mm. Subject to technical changes.



Manual tensioning tool plastic housing

EVO9 up to 13.5 mm strap width

The EVO9 is available in a standard grip span 90 mm (EVO9) or short grip span 80 mm (EVO9SP), for smaller hands. Both tools perform between 53N and 307N. The EVO9HT (high tension) was designed to apply HellermannTyton cable ties from 120N until 516N with a maximum width of 13.5 mm.

Features and benefits

- Standard grip span (90 mm) and short grip span (80 mm) available
- Ergonomic, slip-proof handle for a comfortable and secure grip
- Extremely low-maintenance
- Fast and precise application with minimum effort (TLC-technology)
- Convenient and simple tension adjustment
- Integrated 3 position quick adjustment override (EVO9/EVO9SP/EVO9HT)
- Housing made of resilient and lightweight glass fibre-reinforced polyester



The EVO9 with TLC technology.



Application video:
EVO9 family



Protects muscles and joints.

TYPE	Description	Strap Width max.	Strap Thickness max.	Weight	Article-No.
EVO9	EVO9	13.5	2.0	0.357 kg	110-80002
EVO9HT	EVO9HT	13.5	2.0	0.364 kg	110-80017

All dimensions in mm. Subject to technical changes.

Manual tensioning tool for cable ties with low profile head

MK10-SB up to 9.5 mm strap width

Features and benefits

- Ideal for easy handling of entire HellermannTyton RPE, PE and LPH series
- Tensions and cuts off pre-looped cable ties flush at the head



MK10-SB.

TYPE	Strap Width max.	Strap Thickness max.	Weight	Article-No.
MK10-SB	9.5	2.5	0.372 kg	110-10001

All dimensions in mm. Subject to technical changes.

